

Quelle für alle Abbildungen:

Principles of Yacht Design, 3rd Edition, by Lars Larsson & Rolf E. Eliasson

Froude-number $F_n = V / \sqrt{9.81 \cdot L}$

V = Geschwindigkeit des Boots

L = Länge der Wasserlinie

Fig 5.24 Optimum location of centre of buoyancy

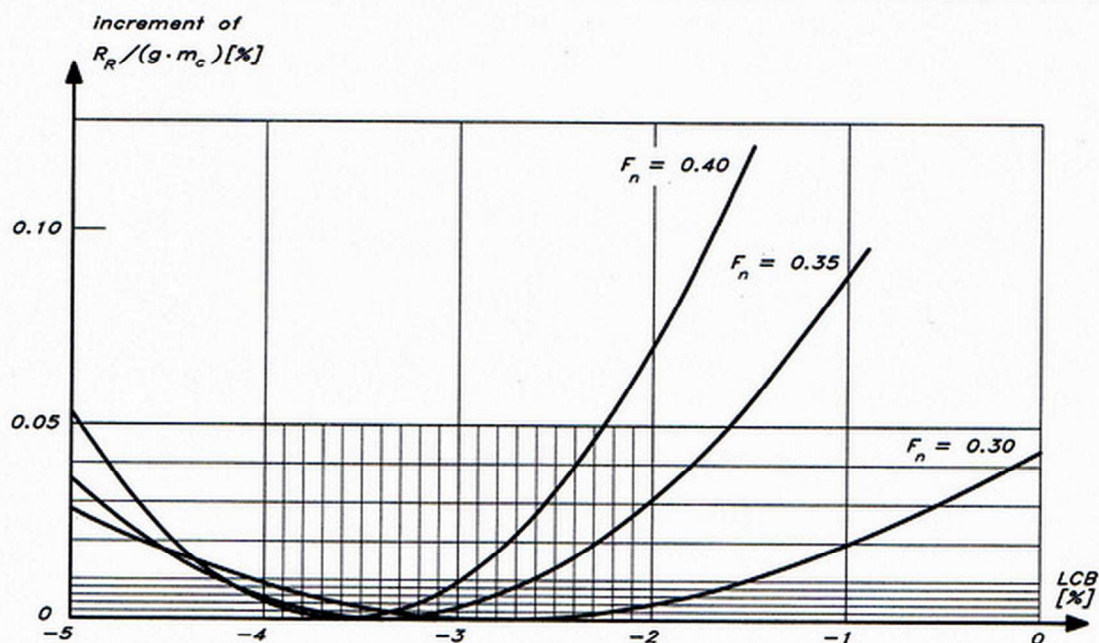
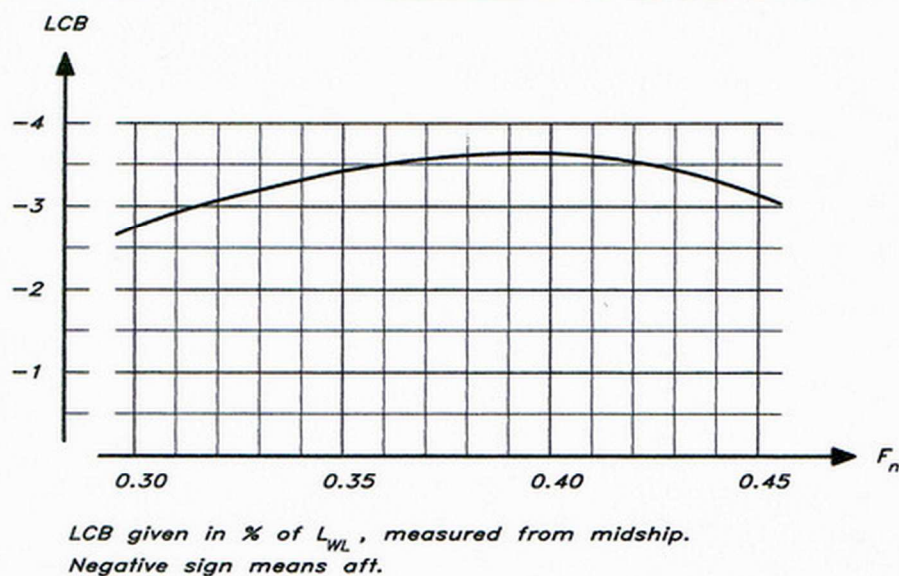


Fig 5.25 Resistance increase (in % of displacement) due to non-optimum LCB location